



SHARP ENGINEERING LLC
Spencer@sharpengllc.com
27175 US 80
Portal, GA. 30450

Rear Axle Assembly Instructions

Hyper Axle

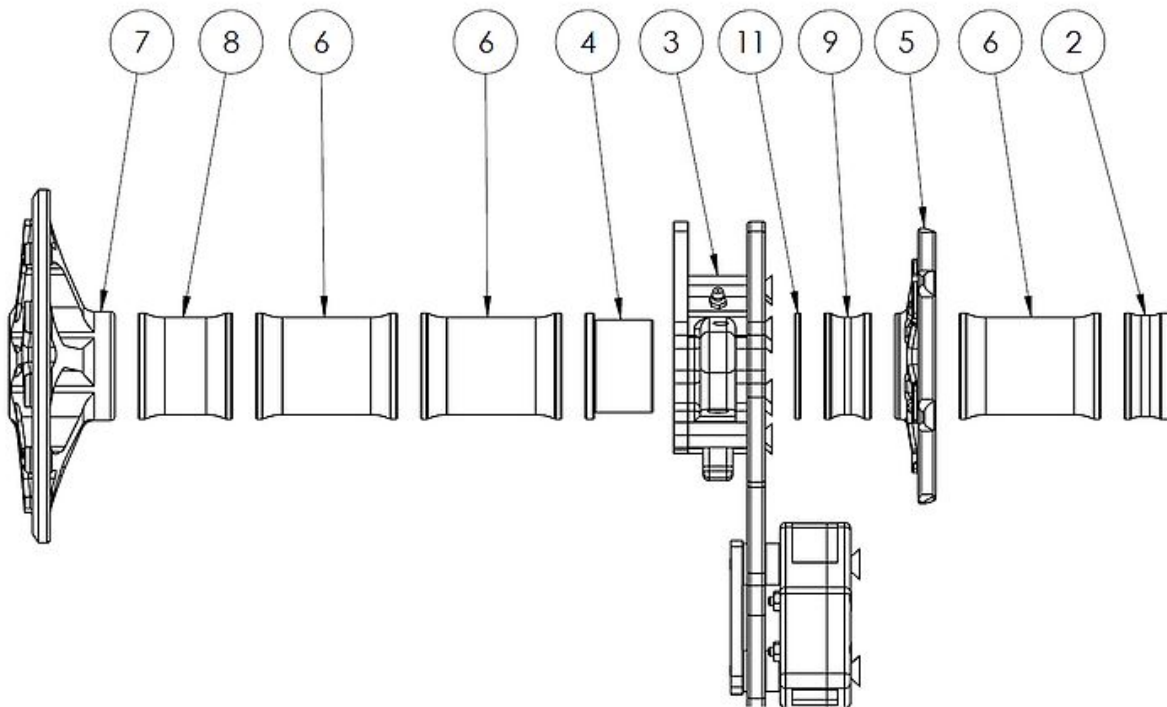
COMPONENTS

- 05-1015 - 1-3/4" 53 Universal Splined Rear Axle (1)
- 05-102 - 1-3/4" Splined Sprocket Carrier & 6 Bolt Brake Hub (2)
- 05-1126-3 - Bearing Carrier Assy TLC 5/16" (1)
- 05-1130-HARP - Bearing Carrier Assembly for Harp Chassis (1)
- 05-131 - Splined Double Bearing Reducer (2)
- 054-0001 - 1-3/4" Axle Nut, 2" Hex, Right Hand Thread, Inverted Taper (1)
- 054-0002 - 1-3/4" Axle Nut, Left Hand Thread, 2" Hex, Inverted Taper (1)
- 054-0750 - 3/4" Splined Double Tapered Axle Spacer (3)
- 055-0125 - 1/8" Rear Spacer (1)
- 055-1000 - 1.00" Rear Spacer (4)
- 055-1001 - Radiused Axle Spacer 1" (2)
- 055-2000 - 2.00" Rear Spacer (1)
- 055-2500 - 2-1/2" Rear Spacer (1)
- 055-3000 - 3.00" Rear Spacer (5)
- 06-142 - 9-1/4" x 3/16" Lightweight Steel Brake Rotor (1)
- 25-528 - 1-3/4" HBS Rear Wheel Center (2)
- Rear Wishbone Set
- **BOLT KIT-BK008-CALIPER**
 - 2 3/8-16x1.5
 - 2 3/8-16 Jam Poly
- **BOLT KIT- BK001-RWISH**
 - 6 7/16-14 x 1.25
 - 1 7/16-14 x 1.5
 - 3 7/16-14 x 1.75
 - 4 7/16-14 Jam Poly
 - 2 11/16 Long Spacers 7/16ID
 - 2 7/16 MISALIGNMENT WASHER



SHARP ENGINEERING LLC
 Spencer@sharpengllc.com
 27175 US 80
 Portal, GA. 30450

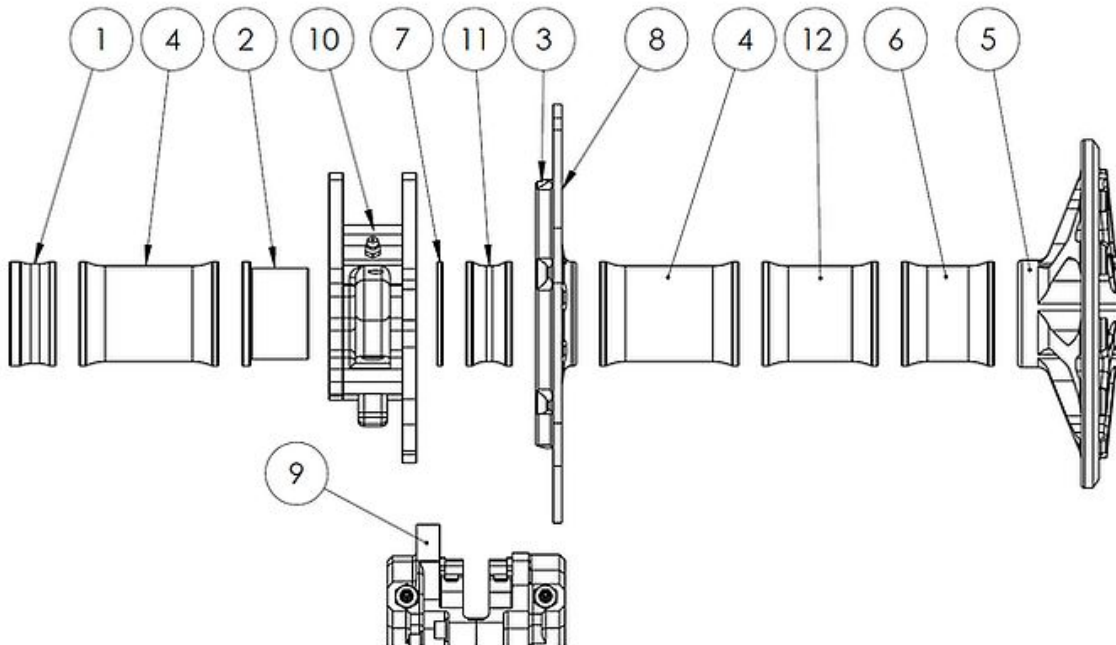
ITEM NO.	PART NUMBER	DESCRIPTION	QTY.
2	055-1001	Radiused Shoulder Axle Spacer, 1.00"	1
3	05-1126	05-1126 with 1.50 spacers	1
4	05-131	Splined Reducer for Double Bearing	1
5	05-102	Splined Sprocket Carrier/6 Bolt Brake Rotor	1
6	055-3000	3" Axle Spacer, Flat	3
7	25-528	HBS 1-3/4" Rear Wheel Center	1
8	055-2000	2" Axle Spacer, Flat	1
9	055-1000	1" Axle Spacer, Flat	1





SHARP ENGINEERING LLC
 Spencer@sharpengllc.com
 27175 US 80
 Portal, GA. 30450

ITEM NO.	PART NUMBER	DESCRIPTION	QTY.
1	055-1001	Radiused Shoulder Axle Spacer, 1.00"	1
2	05-131	Splined Reducer for Double Bearing	1
3	05-102	Splined Sprocket Carrier/6 Bolt Brake Rotor	1
4	055-3000	3" Axle Spacer, Flat	2
5	25-528	HBS 1-3/4" Rear Wheel Center	1
6	055-2000	2" Axle Spacer, Flat	1
7	055-0125	1/8" Axle Spacer, Flat	1
8	06-142	Lightweight Steel Brake Rotor 9-1/4" x 3/16"	1
9	36-100	Wilwood Dynalite Single II 2-Piston Caliper	1
10	05-1128 Fliped	Bearing Carrier TR9, Torsion for 9-1/4" Brake Rotor.	1
11	055-1000	1" Axle Spacer, Flat	1
12	055-2500	2.5" Axle Spacer, Flat	1





SHARP ENGINEERING LLC
Spencer@sharpengllc.com
27175 US 80
Portal, GA. 30450

RTS Axle

Rear Axle Assembly (RTS Axle and Spacer Kit)



Brake Side

Sprocket Side

*Looking at the axle
from the rear of the car